

Our products are designed to be used correctly and with care for the purpose for which they are intended. No liability is accepted by the Tool Connection for incorrect use of any of our products, and the Tool Connection cannot be held responsible for any damage to personnel, property or equipment when using the tools. Incorrect use will also invalidate the warranty.

If applicable, the applications database and any instructional information provided has been designed to offer general guidance for a particular tool's use and while all attention is given to the accuracy of the data no project should be attempted without referring first to the manufacturer's technical documentation (workshop or instruction manual) or the use of a recognised authority such as Autodata.

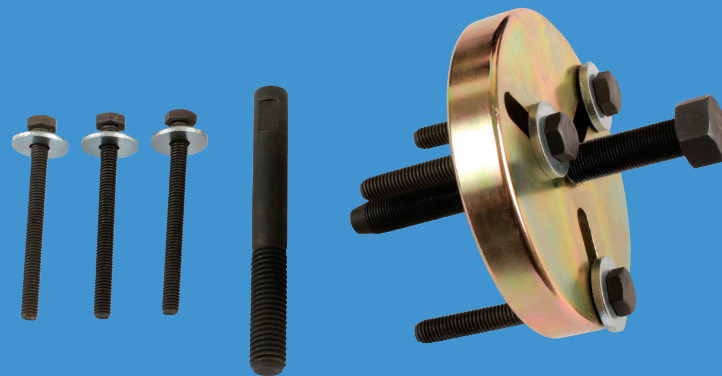
It is our policy to continually improve our products and thus we reserve the right to alter specifications and components without prior notice. It is the responsibility of the user to ensure the suitability of the tools and information prior to their use.

LASER®

6142

Crankshaft Pulley Puller Set BMW Mini

Instructions



Safety First. Be Protected.

Guarantee

If this product fails through faulty materials or workmanship, contact our service department direct on: **+44 (0) 1926 818186**. Normal wear and tear are excluded as are consumable items and abuse.



Distributed by The Tool Connection Ltd

Kineton Road, Southam, Warwickshire CV47 0DR
T +44 (0) 1926 815000 F +44 (0) 1926 815385
info@toolconnection.co.uk www.toolconnection.co.uk



5 018341 060848 >

www.lasertools.co.uk

www.lasertools.co.uk

BMW Mini Crankshaft Pulley Puller Kit

This kit allows the safe removal of the crankshaft pulley (vibration damper) from all W11 Mini engines.

It has been specially designed with slotted mounting holes to allow it to fit both types of W11 pulley.

The kit also includes the thrust pin that must be fitted into the crankshaft before the puller is fitted. The thrust pin prevents the puller from damaging the nose of the crankshaft.

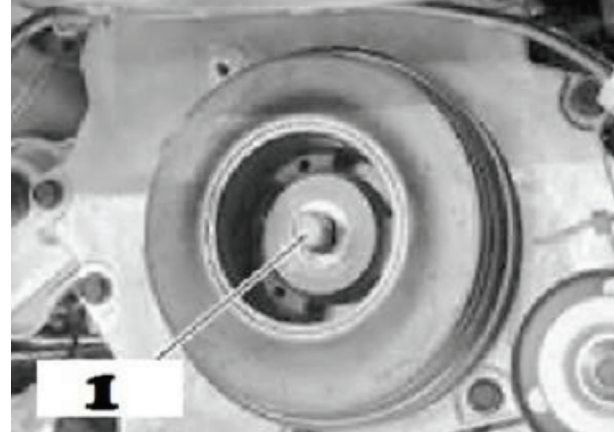
- Mini W11 engine pulley puller as found in R50, R52, R53 chassis.
- Puller is equivalent to OEM 11 8 450 and 11 8 441 adaptor.
- Thrust pin equivalent to OEM 11 8 270, to protect the crankshaft.
- Suitable for all 1.6 Mini Cooper, Cooper S W11 engines.

Grease all threaded components prior to use with Molybdenum disulphide grease



Instructions

1. Remove the crankshaft centre bolt and fit the Thrust Bar (1).



2. Install the puller as shown (2), lubricate the force screw with Molybdenum disulphide grease and remove pulley by tightening the force screw.

